



WHITLOCKS
ESTATE AGENTS

Norfolk Court, Norfolk Square, Bognor Regis

Guide Price £235,000



This well-presented three-bedroom lower ground floor flat offers spacious accommodation within an attractive and characterful building, ideally located just moments from the beach and local amenities.

The property features a generous reception area with plenty of natural light, alongside a modern fitted kitchen with sleek units and ample worktop space. There are three well-proportioned bedrooms, offering flexibility for a variety of uses and a contemporary bathroom.

Additional benefits include tasteful décor throughout, good storage, efficient heating, access to a well-kept communal garden and on-street parking.

Situated on a quiet road, the flat is just a two-minute walk from the seafront, shops, cafés, and transport links, making it perfect for both convenience and lifestyle.

Offered with an onward chain, this charming home is ideal for professionals, couples, or investors. Early viewing is highly recommended.

- Three-bedroom lower ground floor flat
- Spacious accommodation throughout
- Bright and airy Reception Room
- Modern fitted kitchen
- Three well-proportioned bedrooms
- Contemporary bathroom suite
- Well-kept communal garden
- Two minutes from the beach
- Close to local amenities and transport links
- Offered with an onward chain

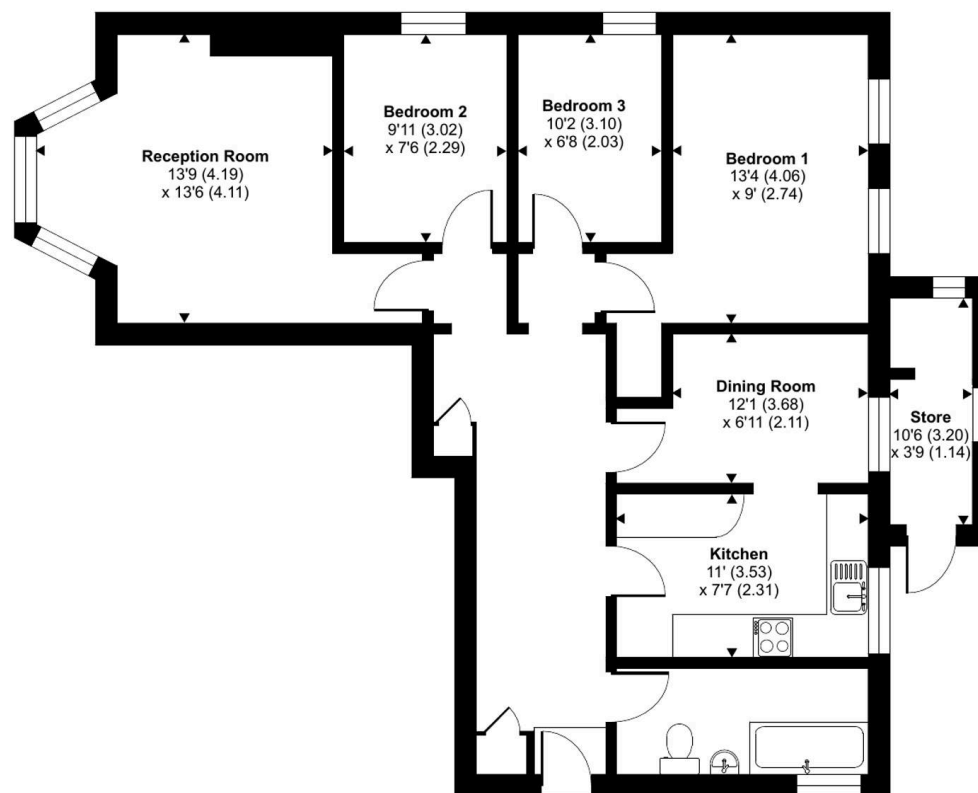


Bognor Regis, famously known for being a popular destination amongst holiday makers, seeking a traditional seaside Town full of Ice Cream, Seafood, Rock Sticks and Crazy Golf! Home to the ever popular Butlins, a holiday resort which includes a vast amount of entertainment for all ages – the tourist attraction benefits from indoor and outdoor pools, rides, shows, restaurants, bars, accommodation and many more! The Town itself also offers a variety of shops, restaurants, pubs, cafes, parks and activities, as well as the picturesque Sea Front, Pier, Sailing Club and Promenade where you can stroll through to Felpham and Aldwick. Chichester, Arundel and Littlehampton are nearby as well as fantastic transport links to London Victoria and Gatwick Airport, also benefitting from a small hospital.

Whitlock Estate Agents Limited trading as Whitlocks Estate Agents for themselves and for the vendor or lessors of this property whose agents they are, give notice that (i) these particulars do not constitute any part of an offer or contract, (ii) all statements contained within these particulars are made without responsibility on the part of Whitlocks Estate Agents or the vendor, (iii) whilst made in good faith, none of the statements contained within these particulars are to be relied upon as a statement or representation of fact, (iv) any intending purchasers must satisfy themselves by inspection or otherwise as to the correctness of each of the statements contained within these particulars, (v) the vendor does not make or give either Whitlocks Estate Agents or any person in their employment any authority to make or give representation or warranty whatsoever in relation to this property. Wide angle lenses may be used.

Norfolk Court, Norfolk Square, Bognor Regis, PO21

Approximate Area = 881 sq ft / 81.8 sq m
Outbuilding = 41 sq ft / 3.8 sq m
Total = 922 sq ft / 85.6 sq m
For identification only - Not to scale



LOWER GROUND FLOOR



Floor plan produced in accordance with RICS Property Measurement 2nd Edition, Incorporating International Property Measurement Standards (IPMS2 Residential). © nitchcom 2026. Produced for Whitlocks Estate Agents. REF:





Whitlocks Estate Agents - Bognor Regis & Pagham

Whitlocks Estate Agents, 229 Pagham Road - PO21 3QD

01243 262747 • sales@whitlocksestateagents.co.uk • whitlocksestateagents.co.uk/

Council Tax band: B

Tenure: Leasehold

EPC Energy Efficiency Rating: C

EPC Environmental Impact Rating: C