



WHITLOCKS
ESTATE AGENTS

Flat 18, Regis Gate 12-28 Longford Road, Bognor Regis
£750 pcm

- Available Now
- Third Floor Apartment
- Double Bedroom
- Open Plan Kitchen / Lounge
- Fitted Shower Room
- UPVC Double Glazing and Under Floor Heating
- Communal Garden and Bike Facility
- On Street Parking
- Walking Distance from the Town Centre
- Walking Distance to the Train Station

Council Tax band: A

Tenure: Leasehold

EPC Energy Efficiency Rating: C

EPC Environmental Impact Rating: C





AVAILABLE NOW

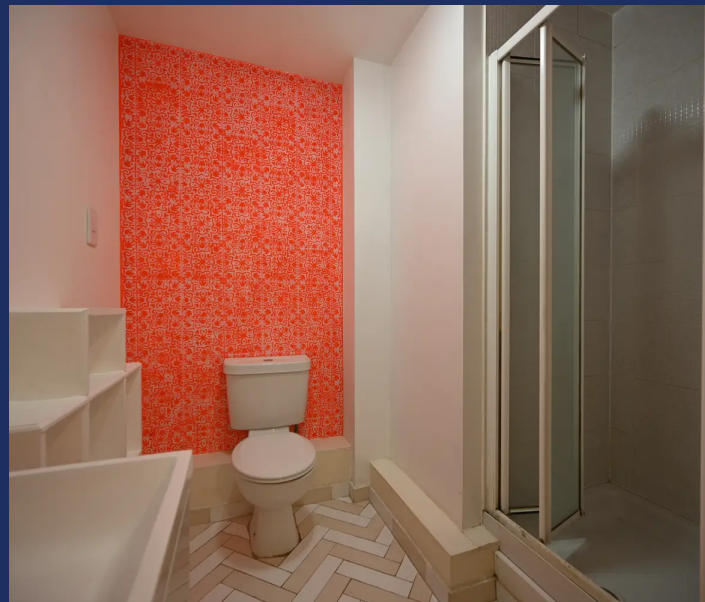
This well-presented Third Floor Apartment is available to let now.

The property is situated on the third floor and can be accessed via a communal stairwell or lift. Comprising of a double Bedroom, an open plan Kitchen / Lounge Dining Room and Fitted Shower Room.

Further Benefits include UPVC Double Glazing and Under-Floor Heating.

Outside to the Rear are Communal Gardens for the residents to enjoy with bike rack facilities.

Conveniently located in the heart of Bognor Regis Town Centre and is just a short stroll to Bognor Regis Train and Bus Station with many other amenities on the doorstep





Whitlocks Estate Agents - Bognor Regis & Pagham

Whitlocks Estate Agents, 229 Pagham Road - PO21 3QD

01243 262747 • sales@whitlocksestateagents.co.uk • whitlocksestateagents.co.uk/

Whitlock Estate Agents Limited trading as Whitlocks Estate Agents for themselves and for the vendor or lessors of this property whose agents they are, give notice that (i) these particulars do not constitute any part of an offer or contract, (ii) all statements contained within these particulars are made without responsibility on the part of Whitlocks Estate Agents or the vendor, (iii) whilst made in good faith, none of the statements contained within these