



WHITLOCKS
ESTATE AGENTS

The Penthouse, 5-6 Southgate
£1,600,000

- Three spacious double bedrooms, including a luxurious principal suite with dressing room and ensuite bathroom.
- Three high-spec bathrooms, including marble-finished ensuite and family bathrooms.
- 3,600 sq. ft. of sophisticated living accommodation.
- Direct lift access into the penthouse for ultimate convenience and privacy.
- Multiple terraces and a wrap-around balcony with panoramic views of Chichester Cathedral
- Bespoke open-plan kitchen and dining area with breakfast bar and concealed utility room.
- South-facing balcony with covered spa area, perfect for entertaining and alfresco dining.
- Allocated private parking for four vehicles.
- Built in 2021 with a 10-year ICW build warranty and high-quality finishes throughout.
- Seamless integration of two original dwellings into a unique, luxurious penthouse.

Southgate, Chichester, PO19

Approximate Area = 3601 sq ft / 334.5 sq m

For identification only - Not to scale



Floor plan produced in accordance with RICS Property Measurement 2nd Edition, Incorporating International Property Measurement Standards (IPMS2 Residential). © ncheom 2025. Produced for Whitlocks Estate Agents. REF: 1370742





An Exceptional Penthouse with Panoramic Cathedral and South Downs Views

A truly unique opportunity to acquire a magnificent three double bedroom, three bathroom penthouse, offering far-reaching, uninterrupted views of historic Chichester and the Cathedral, the South Downs, Goodwood Racecourse, and The Trundle. Originally configured as two separate dwellings, this property has been seamlessly integrated and refurbished to an exceptionally high standard, providing a singular, luxurious living experience.

Built in 2021 with a 10-year ICW build warranty, the residence benefits from private allocated parking for four cars and direct lift access, ensuring convenience and privacy. The penthouse is designed to maximise both light and views, with multiple terraces and a wrap-around balcony offering southerly, easterly, westerly, and northerly aspects.

The principal suite is a sumptuous retreat, complete with a spacious dressing room, extensive bespoke wardrobes, and a luxurious ensuite featuring a walk-in shower, WC, and wash hand basin. A private balcony extends from the suite, offering spectacular vistas of Chichester. The two additional double bedrooms are generously proportioned, one with a marble-finished ensuite and the other serviced by a family bathroom, both designed with bespoke wardrobes and elegant finishes.





The wrap-around terraces provide a rare opportunity to enjoy multiple vantage points across the city and countryside, encompassing panoramic views to Chichester Cathedral, the South Downs, Goodwood Racecourse, and The Trundle.

The apartment is located in the centre of Chichester a short distance from the mainline railway station offering direct trains to London.

This exceptional penthouse combines contemporary luxury, expansive living space, and iconic views, creating a home that is as impressive in design as it is in location.

Please note: Some images are provided for illustrative purposes to showcase the intended finish of the apartment. Refurbishment works are currently in progress. For the most up-to-date information on the current stage of works, please contact Whitlocks Estate Agents.









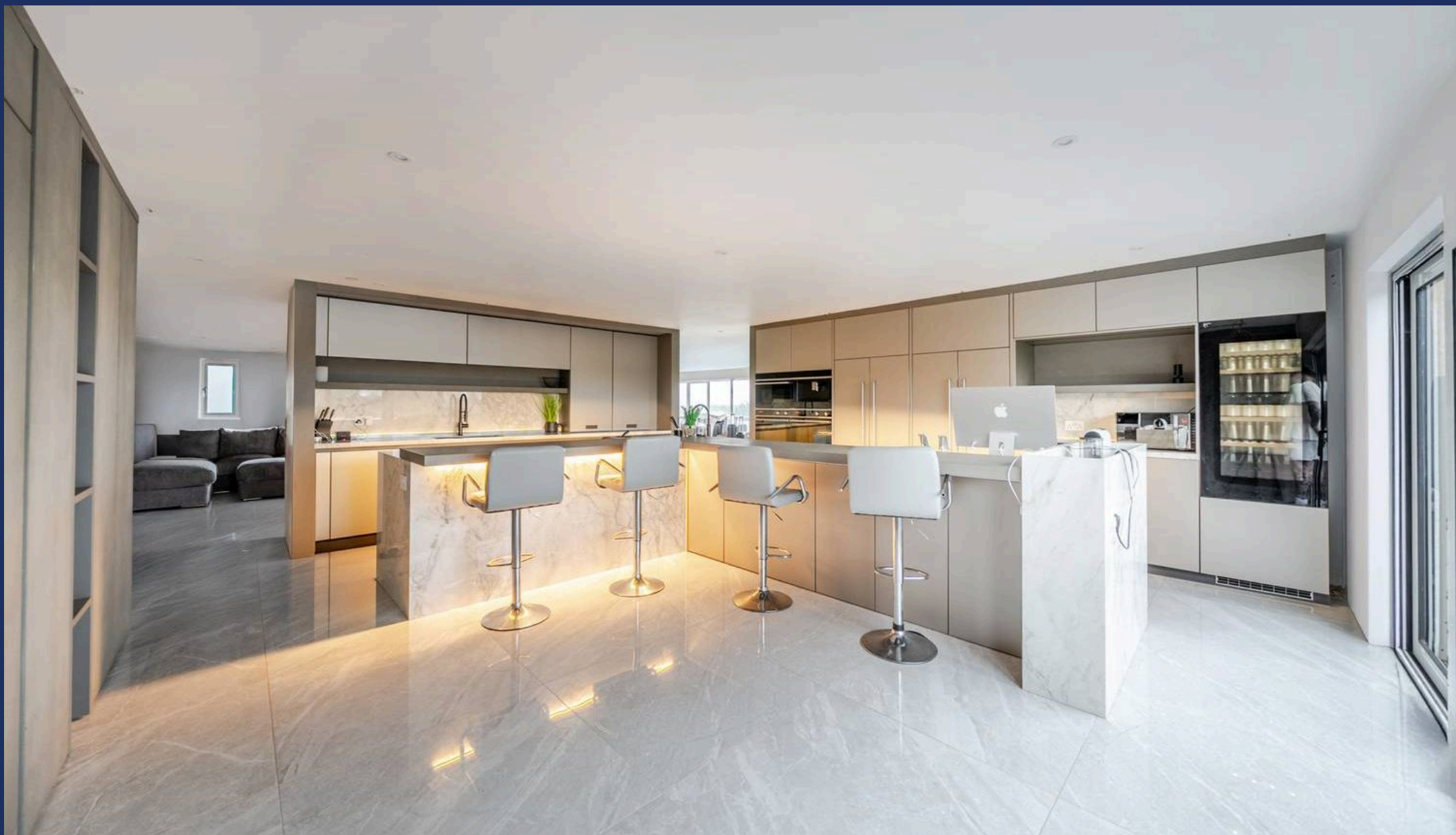


The remarkable and historical City of Chichester offers an abundance of amenities including boutiques, shops, cafes, restaurants, and charming pubs as well as a Festival Theatre. Furthermore, there are excellent Sports Facilities close by such as Tennis Courts, Swimming Pools, and Gyms. Additionally, St Richard's Hospital is on the outskirts of the City Centre is a medium size District Hospital offering a range of services and wards including an Accident and Emergency Department. There are fantastic transport links within the City including a reliable bus service and train station with a direct line to London Victoria. Chichester is also within proximity to Goodwood which is famous for its special events including the world-renowned Festival of Speed and Goodwood Revival for motor racing enthusiasts as well as a season of Horse Racing including the Qatar Goodwood Festival. Chichester also offers plenty of beautiful walks and cycle routes on its doorstep, including Brandy Hole Copse Woodland, Centurion Way, or onto the picturesque Chichester Marina to watch the boats and yachts. You are also within a short drive to Selsey Sea Front and the ever-popular West Wittering white sand beach!

Council Tax band: F

Tenure: Leasehold





Whitlocks Estate Agents - Bognor Regis & Pagham

Whitlocks Estate Agents, 229 Pagham Road - PO21 3QD

01243 262747 • sales@whitlocksestateagents.co.uk • whitlocksestateagents.co.uk/

Whitlock Estate Agents Limited trading as Whitlocks Estate Agents for themselves and for the vendor or lessors of this property whose agents they are, give notice that (i) these particulars do not constitute any part of an offer or contract, (ii) all statements contained within these particulars are made without responsibility on the part of Whitlocks Estate Agents or the vendor, (iii) whilst made in good faith, none of the statements contained within these particulars