



WHITLOCKS
ESTATE AGENTS

Flat 14, Garden Lodge Pagham Road, Bognor Regis
£800 PCM

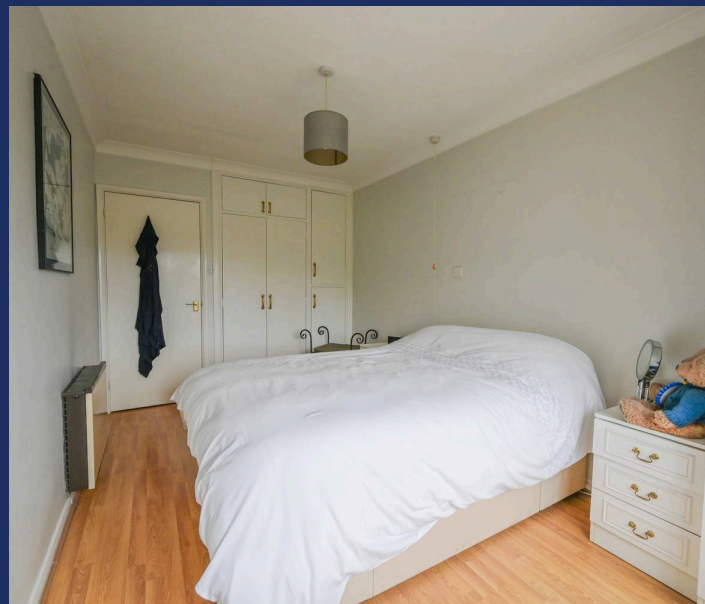


Available Now for a Long Term Let
First floor, **AGE RESTRICTED (55 YRS +)**, apartment available to let in the heart of Nyetimber Village, just walking distance from a variety of amenities.

The property consists of a modern fitted kitchen, spacious lounge, double bedroom with built-in wardrobes, and a modern fitted shower room.

Parking is available on a first come first serve basis.

Some pets may be considered.



Often unheard of, other than by locals yet extremely desirable, Nyetimber is a small Village within the Parish of Pagham and is famous for its 16th and 18th century Pubs as well as the oldest Pram Race in the world! Situated inland but still within walking distance to the coast as well as Pagham Village where the Sea Front, Harbour and Nature Reserve can be found. The historic Village has a variety of amenities including Convenience Stores, a Post Office, a Tea Shop, a Hairdressers and many more. Nyetimber offers fantastic transport links and is within close proximity to the seaside Town Bognor Regis and the Cathedral City of Chichester. Our office is also positioned within the heart of the Village.

Council Tax band: A

Tenure: Leasehold

EPC Energy Efficiency Rating: C

EPC Environmental Impact Rating:

- Available Now for a Long Term Let
- Modern kitchen with integrated appliances
- Open plan living area
- Modern fireplace
- Ample natural light
- Built-in wardrobes
- Wood and laminate flooring
- Modern shower enclosure
- Ample bathroom storage
- Spacious garden





Whitlocks Estate Agents - Bognor Regis & Pagham

Whitlocks Estate Agents, 229 Pagham Road - PO21 3QD

01243 262747 • sales@whitlocksestateagents.co.uk • whitlocksestateagents.co.uk/

Whitlock Estate Agents Limited trading as Whitlocks Estate Agents for themselves and for the vendor or lessors of this property whose agents they are, give notice that (i) these particulars do not constitute any part of an offer or contract, (ii) all statements contained within these particulars are made without responsibility on the part of Whitlocks Estate Agents or the vendor, (iii) whilst made in good faith, none of the statements contained within these particulars