



WHITLOCKS
ESTATE AGENTS

Flat 3, Ashmere Court Flansham Park, Bognor Regis
In Excess of £225,000



Ideal First-Time Buy or Buy-to-Let Investment

A superb opportunity to purchase this well-presented two-bedroom apartment, ideally situated in a highly sought-after location just a short walk from a wide range of local amenities including a doctors' surgery, convenience stores, bus routes, and more.

Step inside to a welcoming and spacious entrance hall that leads into a generously sized lounge/dining area, bathed in natural light. Sliding doors open onto a completely secluded, private balcony—perfect for relaxing or entertaining. The lounge flows seamlessly into a well-equipped fitted kitchen offering plenty of storage and workspace.

The apartment features two comfortable double bedrooms, both with built-in storage, as well as a modern fitted bathroom.

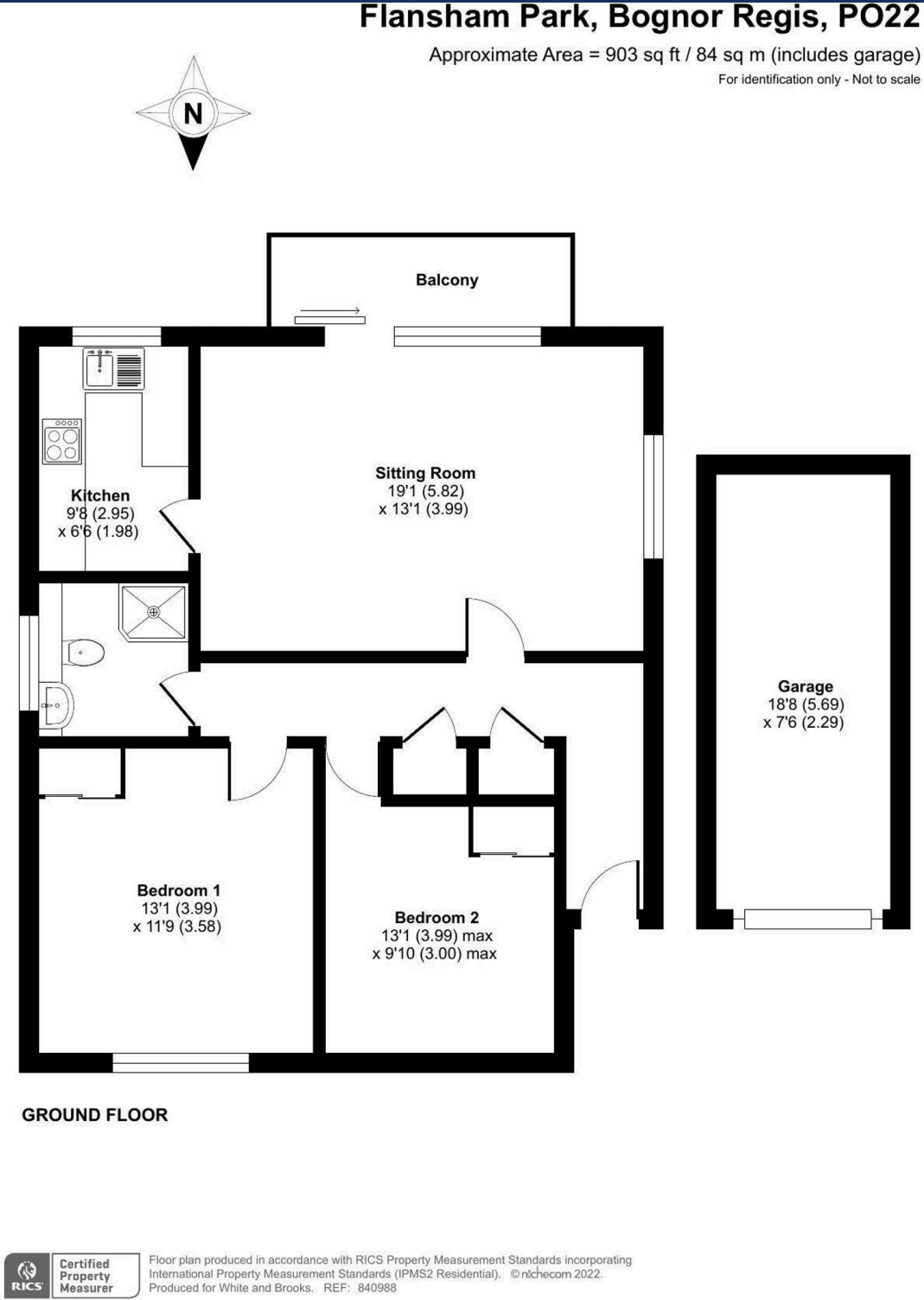
Additional highlights include UPVC double glazing, gas-fired central heating, and a private garage located in a well-maintained compound. Residents also enjoy access to attractive communal areas.

Whether you're a first-time buyer or an investor seeking a high-demand rental property, this home ticks all the boxes.



Felpham is a charming Village located directly to the east of Bognor Regis, offering much history and array of different architectural properties and Private Estates. Popular amongst all age ranges due to its convenient seaside location and comprehensive facilities on offer which include Shops, Post Offices, Butchers, sought after Schools, Convenience Stores, a Golf Club, Pubs, Restaurants, a Sports Centre, Playing Fields and many more. The Village is within a short stroll to the Beach, where you will find the famous Lobster Pot Restaurant, Beachcroft Hotel and Yacht Club. The Promenade is a lovely place to walk with stunning coastal views which takes you towards Bognor Regis Town leading to Aldwick. Felpham is also within easy access to Chichester and Littlehampton.

Whitlock Estate Agents Limited trading as Whitlocks Estate Agents for themselves and for the vendor or lessors of this property whose agents they are, give notice that (i) these particulars do not constitute any part of an offer or contract, (ii) all statements contained within these particulars are made without responsibility on the part of Whitlocks Estate Agents or the vendor, (iii) whilst made in good faith, none of the statements contained within these particulars are to be relied upon as a statement or representation of fact, (iv) any intending purchasers must satisfy themselves by inspection or otherwise as to the correctness of each of the statements contained within these particulars, (v) the vendor does not make or give either Whitlocks Estate Agents or any person in their employment any authority to make or give representation or warranty whatsoever in relation to this property. Wide angle lenses may be used.





Whitlocks Estate Agents - Bognor Regis & Pagham

Whitlocks Estate Agents, 229 Pagham Road - PO21 3QD

01243 262747 • sales@whitlocksestateagents.co.uk • whitlocksestateagents.co.uk/

Council Tax band: C

Tenure: Leasehold

EPC Energy Efficiency Rating: C

EPC Environmental Impact Rating: C